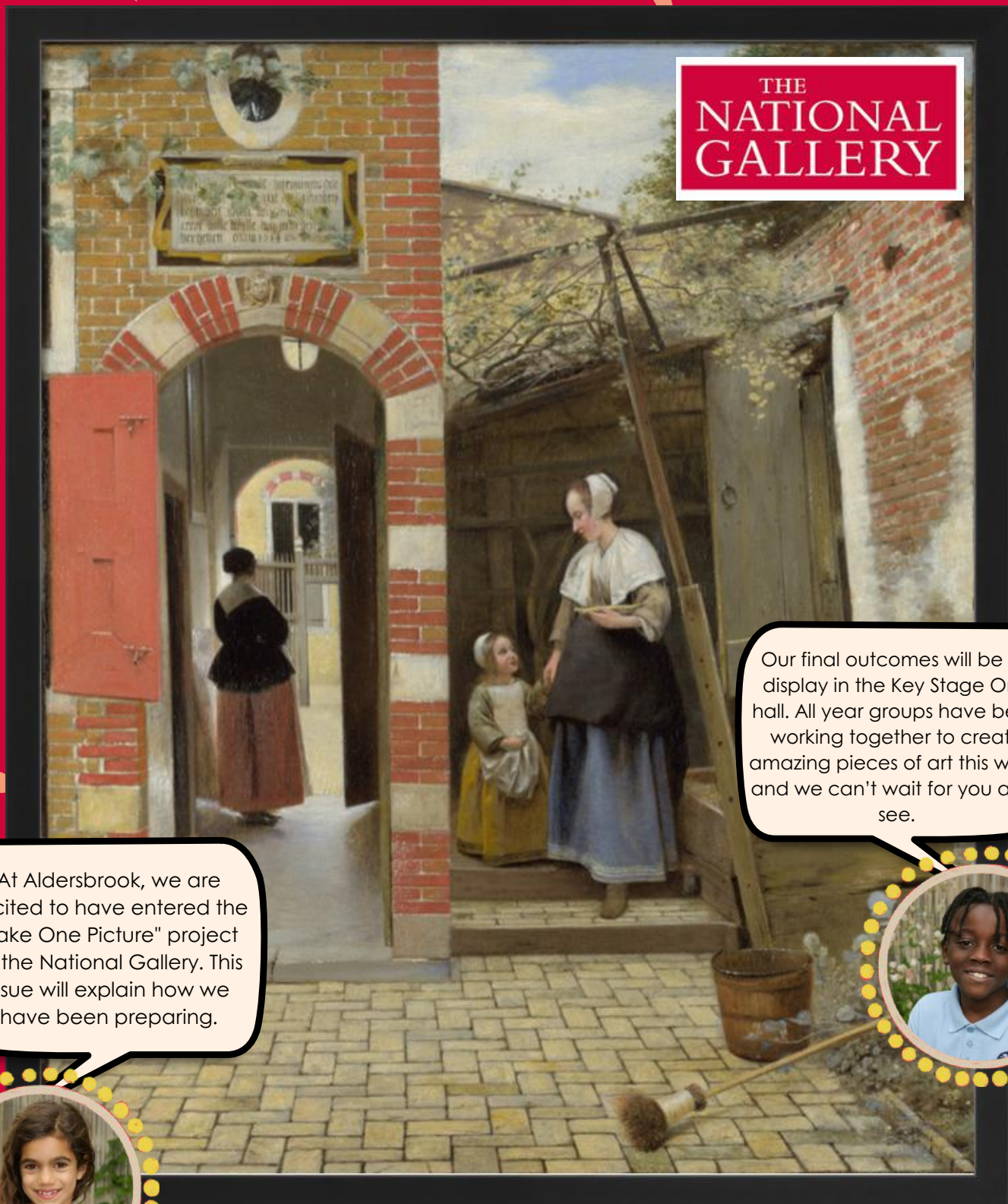


ALDERSBROOK VOICES



LEARNING
AND
LEADING
Issue 3

"TAKE ONE PICTURE" PROJECT



At Aldersbrook, we are excited to have entered the "Take One Picture" project at the National Gallery. This issue will explain how we have been preparing.

Our final outcomes will be on display in the Key Stage One hall. All year groups have been working together to create amazing pieces of art this week and we can't wait for you all to see.



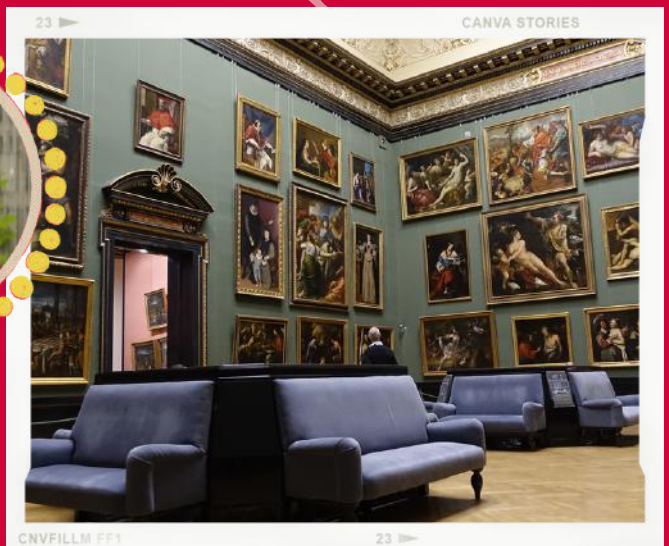
**THE COURTYARD OF A HOUSE IN DELFT
BY PIETER DE HOOCH**

WHAT IS IT ALL ABOUT?



Our school is excited to be part of a wonderful national project that brings schools from all over the country together to showcase our creativity! In this project, each school gets to pick one special picture and then discuss it as a group. It's a great way to see how everyone has different ideas and unique ways of looking at the same picture. We're participating because we believe art is really important. It helps us develop our skills and understand other subjects better, too. Plus, it's fun to work together and hear all the different opinions!

The most exciting part of this project is the competition. The best artworks chosen from schools like ours will be displayed in the National Gallery for a whole year! That means lots of people from all over will be able to see our work. Our school entered the competition this year because we want to show how much we love art and how it brings us together as a community. It's a chance to shine and demonstrate our talents on a big stage. We can't wait to see what all the other schools come up with and share our own ideas through our creativity.



HISTORY OF THE PAINTING



The painting is called "The Courtyard of the House in Delft" by Pieter de Hooch. This amazing artist painted it to show what his surroundings looked like in great detail. He used light and shadows so carefully that it feels like you're looking at a real scene. Pieter de Hooch barely made any mistakes because he was so meticulous. He started his career in 1655 and quickly became known as a master artist. He was born in the Netherlands, where his dad worked as a bricklayer and his mum was a midwife.

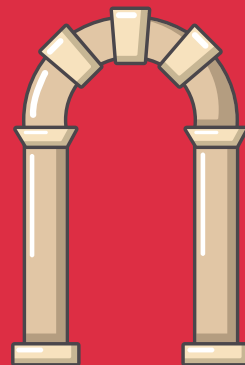
When you look at the painting, it feels like there are two pictures in one. This is a unique style that de Hooch was known for. You can see little baskets that look like they were used for collecting food. The archway in the painting is decorated with delicate flowers, intricate brickwork and detailed lettering. There's even a plaque that makes the archway look even more important. Every part of the painting shows how much care and skill Pieter de Hooch put into his work. We're excited to discuss and explore all these details as we prepare our own ideas for the project.



RICH AND POOR



There are more details that show the differences between rich and poor. For example, there is a gold plaque that makes the place look important and fancy, but right below it, there is a broom on the floor, showing that people had to do chores. There's even mold on the wall, which shows that not everything was perfect. These little things help us understand what life was like back then. Pieter de Hooch was really good at showing both the beautiful and the not-so-beautiful parts of life in his painting. This helps us appreciate his careful work and how he used art to tell stories.



When you look closely at the painting, "The Courtyard of the House in Delft," you can see that Pieter de Hooch was not just showing a pretty scene but also telling a story about rich and poor people. You can tell the difference by looking at their clothes. Some people are dressed in fancy clothes while others have simple, worn-out clothes. The setting around them shows this too. Some parts of the building look grand and beautiful, showing that some people were wealthy. But other parts are broken and old, showing that some people were not as lucky. This makes the painting really interesting and makes you think a lot.



PLANTS AND WEATHER



Some parts of the courtyard have neatly maintained plants, showing that some people took great care of their surroundings. But other parts have neglected plants, which might suggest that these areas were not looked after as well. This difference in how the plants are kept makes the painting really interesting and makes you think about the lives of people back then.



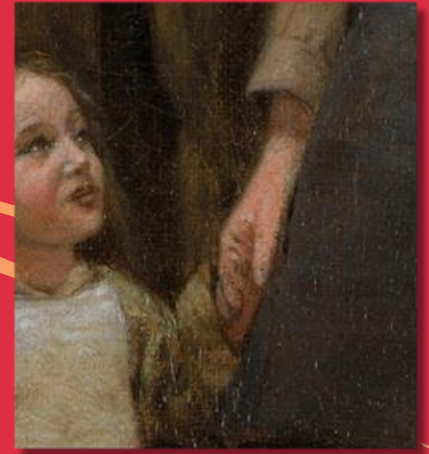
The painting also seems to suggest that it is early autumn. You can tell this by the color of the leaves, which are starting to change. The people in the painting are dressed a bit warmer, which also tells us that the weather is getting cooler. These little details help us understand what life was like back then. Pieter de Hooch was really good at reflecting what the world around him was like through his paintings. This helps us appreciate his careful work and how he used art to tell stories.



RELATIONSHIPS



The painting "The Courtyard of the House in Delft" shows different relationships between people. In one part, a girl and her mum are holding hands and looking at each other. They seem happy and loving because they are smiling and look like they are going somewhere together.



In another part, there is a mysterious and lonely lady who looks like she is in deep thought. You can see this because she is standing by herself in the dark, while the girl and her mum are in the light. This shows how the girl and her mum are close and happy, but the rich lady feels lonely. These details help us see the different feelings and relationships in the painting.



HOW HAVE WE PREPARED?



DISCUSSION & RESEARCH

EDUCATIONAL VISITS & WORKSHOPS

We have taken part in many lessons that have involved speaking about this painting and what it could mean. We also formed our own questions.



Children from all over our school have been lucky enough to visit the National Gallery and take part in a workshop led by an expert.



ART WEEK



The whole school is taking part in 'Art Week' this week. Here are some examples of what we are working on. We can't wait to share our final pieces.

